



GALLERY ARTIST NEWSLETTER

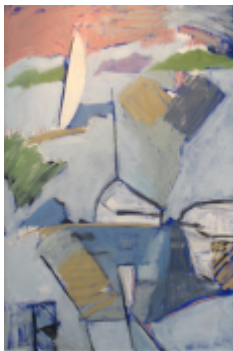
WINTER 2011 ❄️

GALLERY ARTISTS SEND WORD.....

Ruthe Sholler received an invitation to become Second Vice President of the Southwest Florida Pastel Society. The SWFPS is composed of artist/members from various towns and cities along the West Coast of Florida. Ruthe has work in two exhibits at the Von Lebig Art Center and at Hodges University in Naples, Florida.

Nancy Colella has been invited to exhibit at the 28th Annual Immaculata University Art Show in May of 2011 in Immaculata, Pennsylvania. See www.immaculata.edu/artshow to view other participating artists. **Burt Longenbach** fulfilled requirements for becoming a Full Member of the New England Watercolor Society with his acceptance in the society's 12th Biennial North American Open Juried Exhibition held in October at the North Shore Arts Association in Gloucester. Formal recognition as a Full Member will take place at the society's upcoming annual meeting in March.

Peggy Roth Major has two pieces in the 3rd Annual New England Artists for Animals Member Artists Show held at The Fernwood Gallery in Norwell through December 31. NEAFA is a synergistic group of people who help fund therapy, companion, and service animals (both domestic and wildlife), the people who need them, and the programs that train, place, and support them. Peggy and **Maureen Brookfield's** work is featured in their 2011 calendar. **Chippa Martin** participated in several exhibits this

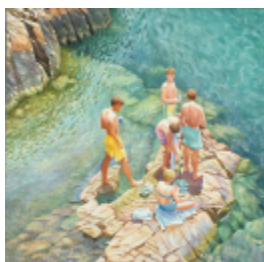


fall: Snap to Grid at the Los Angeles Center for Digital Art, a group show held in conjunction with the LA Downtown Art Walk, the 2010 Invitational at The Hudson D. Walker Gallery; Fine Arts Work Center and Small Works at the Provincetown Art Association and Museum; Art from Detritus, Viridian Artist Gallery, New York City group show juried by Vernita Nemec. NY Arts named Art from Detritus the "group

show in the spotlight". The Judge Nagle Portrait Committee and the Plymouth County Bar Association recently presented a commemorative portrait in honor of his long career as First Justice of the Brockton District Court painted by **Dianne Panarelli Miller**. **Dianne Dolan** will be participating in open studios and Small Wonders with the Artists Group of Charlestown at the Stovepipe Factory building. **Beverly Rippel's** oil and encaustic painting, Pink Cap Gun I, has been selected for the 2011 Portland

Please send news about Gallery Artist happenings to:
galleryartists@ssac.org Deadline for the next newsletter is March 28.

Museum of Art's Biennial Exhibition which will take place April 7- June 5. **Anne Belson's** Art Studio is open for the holidays, Saturday, December 11th 12 noon- 4 pm, 400 Davisville Road, East Falmouth. Greeting cards and original watercolors will be available. **Jeanne Wiley's** teapot Butterfly Kisses has been accepted into the permanent teapot collection at Children's Hospital Boston. **Page Railsback** is opening a new gallery, Studio 277, with Walter Carlton in Puerto Vallarta, Mexico. **Ros Farbush** will be exhibiting her work there in the winter months. Page is offering her 6th Annual Painting Workshop in Mexico the last week of February. **Becky Haletky** chaired the New England



Watercolor Society 125th Anniversary Members Exhibit held at the Plymouth Center for the Arts-an exhibit of over 140 works by members past and present. Becky is offering watercolor workshops in County Mayo, Ireland from September 7-17, 2011 and Santorini,

Greece in 2012. **Donna Rossetti-Bailey** won the Allan J. Smith Memorial Award for Pastel for her pastel painting Afternoon Sky at the 82nd Grand National Exhibition of the American Artists Professional League. The exhibit was held at the Salmagundi Club in New York, November 2-12th. **Pat Isaac** will be participating in the Cardinal Cushing Center's Community Art Show in Hanover on Saturday, December 11th from 12- 5pm. **Pam Golden's** installation of large scale drawings on fabric, Homeplace, is on display at the Longhall Gallery, at the South Shore YMCA in Hanover. A closing reception will take place on from 3-5 pm on Sunday, December 12th. A solo show of **Dorothy Simpson Krause's** work from the series Losing Ground and Viewpoint at Thayer Gallery/Thayer Academy in Braintree will be on display until December 17.

At left, Chippa Martin, Field of Boats ; Above Becky Haletky, Cohasset Swimmers

GALLERY ARTIST JURYING



Gallery Artists are selected twice a year in the fall and the spring. Jurying for new Gallery Artists will take place April 20. Work may be dropped off at the Art Center Saturday, April 16 from 10-4 or

Sunday, April 17 from 12-4. Call the office for details: 781-383-2787. There is a \$35 application fee.

EXHIBITION OPPORTUNITIES

Motion

Gallery Artists Exhibit—January 14-February 27, 2011

Bancroft Gallery

Juror: Perry Price

Assistant Curator of Exhibitions and Collections

Fuller Craft Museum, Brockton, MA

Sources/ORIGINS

National Juried Show

Juried by Howard Yezerski

Howard Yezerski Gallery, Harrison Avenue, Boston

April 15-May 22, 2011


Entries due: March 7, 2011

MARK YOUR CALENDARS!

 **APRIL 1, 2011**

Fools, Fakes and Forgeries

Special Event

 **JUNE 17-19, 2011**

56th Annual Arts Festival

On Cohasset Common



Photo credit: Kimberlee Alemian

***Please keep your membership up to date in order to receive Gallery Artist membership opportunities.



@ SOUTH SHORE ART CENTER

119 Ripley Road, Cohasset, MA

BANCROFT GALLERY
JANUARY 14-FEBRUARY 27

Motion

Gallery Artists Exhibit

Bancroft Gallery

Juror: Perry Price

Opening Reception, January 14, 6-8 pm

MARCH 4-APRIL 10

Upon Further Consideration

David Lang & Virginia Fitzgerald

Opening Reception, March 4, 6-8 pm

DILLON GALLERY

A Show of Hands

JANUARY 14-FEBRUARY 27

Jeremy Barnard, Lucretia Chase, Jack Dickerson, Eleanor Elkin,
Peggy Roth Major, Michele Meister, Beverly Rippel
and Isabel Shamitz

People and Place: New Gallery Artists

MARCH 4-APRIL 10

Wes Carlson, D. Peter Collins, Dana Malcolm,
Jan McElhinny, Vcevy Strekalovsky

MANNING LOBBY

FACULTY FEATURE

JANUARY-FEBRUARY: Seana Carmody

MARCH-APRIL: Sheilagh Flynn

SATELLITE LOCATIONS

PAUL PRATT MEMORIAL LIBRARY
35 RIPLEY ROAD, COHASSET

NOVEMBER-DECEMBER: Kimberlee & Richard Alemian

JANUARY-FEBRUARY: Robert Beaulieu

MARCH-APRIL: Judy St. Peter

SOUTH SHORE CONSERVATORY
1 CONSERVATORY DRIVE, HINGHAM

NOVEMBER-FEBRUARY

Music Circus Gallery: Becky Haletky and Maureen Brookfield
Palmer Gallery: Mary Smith

MARCH-APRIL

Philip Dolan Retrospective